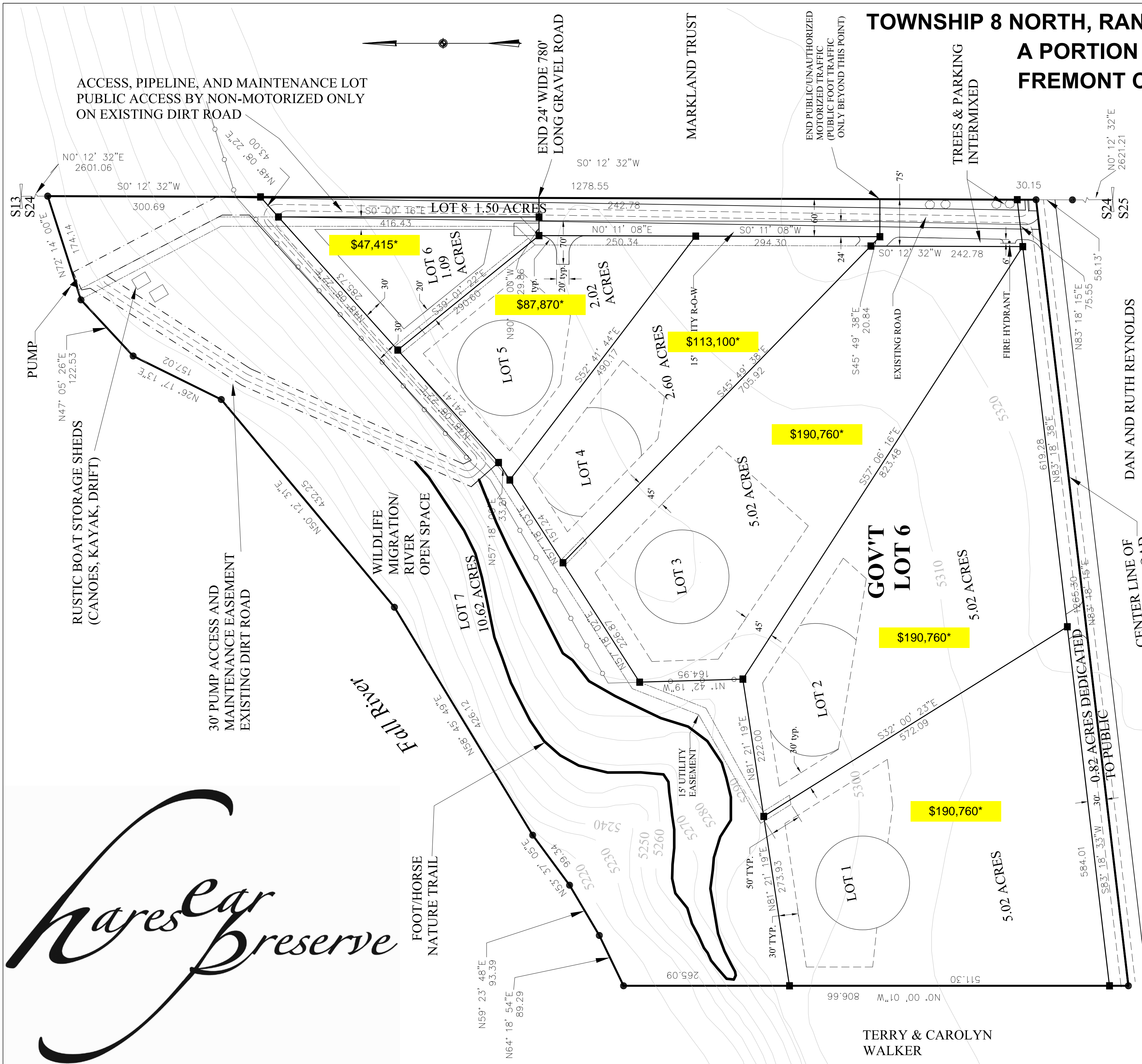


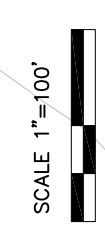
**TOWNSHIP 8 NORTH, RANGE 42 EAST BOISE MERIDIAN
A PORTION OF SECTION 24
FREMONT COUNTY, IDAHO**



Prices based on new September 2009 commercial appraisal. They are down approximately 35% overall from last year.

* Prices dated as of 9/15/2009.
* Prices are for reference only and subject to change. As lots sell prices are likely to increase.

- LEGEND**
- MONUMENT FOUND
 - SET 8" PLASTIC CAP ON 30" RE-BAR MARKED KF ADAMS PLS 5497
 - Building Envelope
 - Secondary Building Envelope for Outbuildings Only
 - Existing Fence
 - Utility Right of Way
 - - - Maintenance Easement



Hares Ear Preserve

TERRY & CAROLYN WALKER

FINAL PLAT
SHEET 2 OF 2